



### MANUFACTURING DOCUMENT MANAGEMENT:

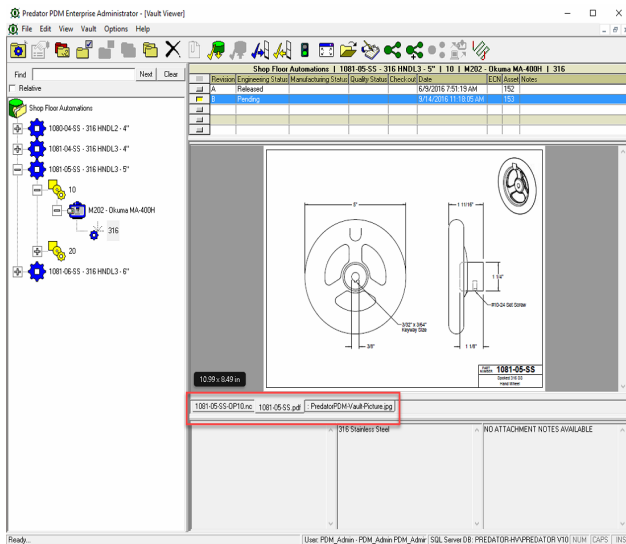
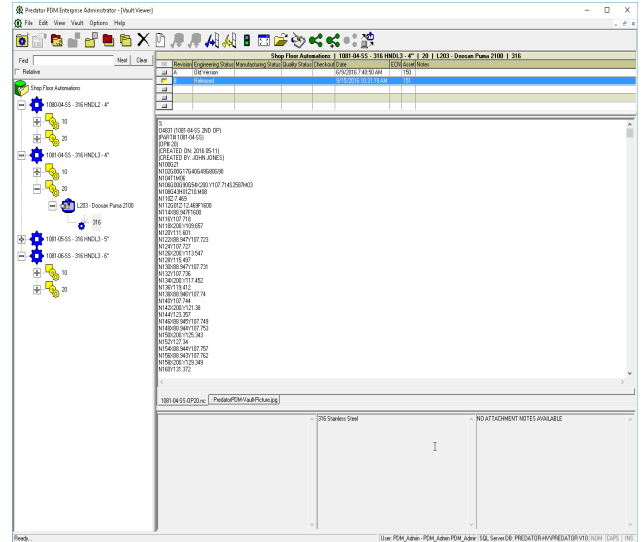
Production data management (PDM) for CNC programs, setup sheets, CAD/CAM designs, and other manufacturing files. Predator PDM supports ECNs and revision control, plus secure browsing and viewing of Microsoft Office, Adobe PDF, and CAD files including Solidworks eDrawings.

### WHAT IS PREDATOR PDM?

Predator PDM is a paperless, manufacturing-driven document system designed to organize and control CNC programs, setup sheets, safety procedures, quality documents, and other documents, with complete revision control. Predator PDM supports paperless shop floor operation by way of integration with DNC, CNC Editor, Virtual CNC, MDC, and Tracker.

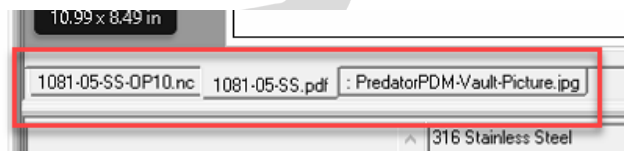
### BEST-PRACTICE WORKFLOW:

Predator PDM includes best-practice workflow wizards for release, unrelease, revise, rollback, checkin, and checkout. Every wizard honors user and group permissions. Includes ISO9000 style history.



### DOCUMENT CONTROL:

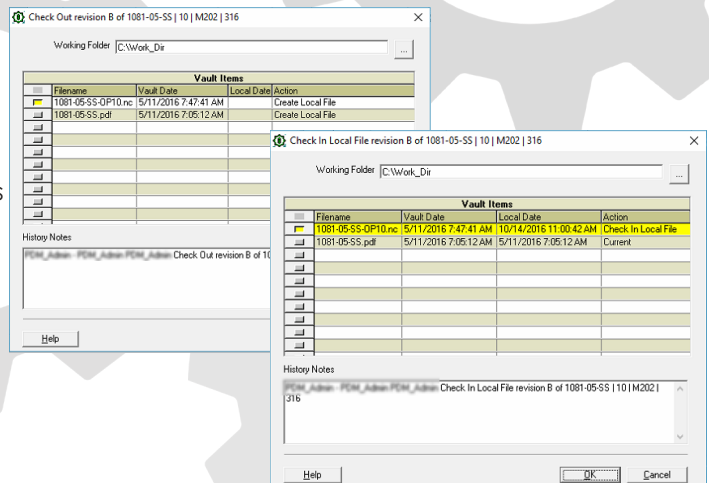
With Predator PDM, you are able to link all of your PDF, Excel, Word documents, and websites right in to the vault items. Vault items may contain several files, organized with convenient tabs.



### CONTROLLED FILE CHECK-OUT & CHECK-IN:

Predator PDM allows users to check files out of the vault, and creates a historical record of which logged-in user checked the file out. That file is then locked - no other users can access or edit that file until you're done with your edits and you have checked it back in to the vault.

When a user checks in the file, Predator PDM will check to see if their local version is different from the vault version. If they are different, Predator PDM will highlight the file showing the differences.



## HISTORY REPORT:

With Predator PDM, each transaction is logged and recorded. So if your customer calls up and asks for a change log history, you can run a history report for them.

History for Shop Floor Automations | 1081-05-SS | 10 | M202 | 316 | B

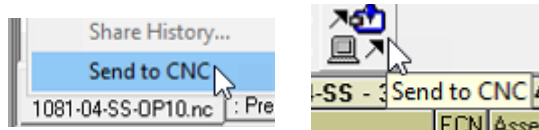


Date	User	Action	Notes
<b>1081-05-SS - 316 HNDL3 - 5"   10 -   M202 - Okuma MA-400H   - 316   B</b>			
6/9/2016 7:51:28AM	FDW_AAS	Revise Vault Item	FDW_Admin - FDW_Admin FDW_Admin Made new revision B of 1081-05-SS   10   M202   316
9/14/2016 11:18:05AM	FDW_AAS	Command Execute	FDW_Admin - FDW_Admin FDW_Admin Executed Send to CNC on revision B of 1081-05-SS-OP10.nc
10/14/2016 10:58:23AM	FDW_AAS	Check Out	FDW_Admin - FDW_Admin FDW_Admin Check Out revision B of 1081-05-SS   10   M202   316



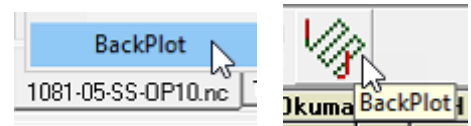
### INTEGRATES WITH PREDATOR DNC:

Machinists using Predator PDM can download released programs to their CNC machines using Predator DNC with a single click.



### INTEGRATES WITH PREDATOR CNC EDITOR:

CNC programmers using Predator PDM can revise, compare, and backplot their CNC programs with the Predator CNC Editor with a single click.



### INTEGRATES WITH PREDATOR MDC:

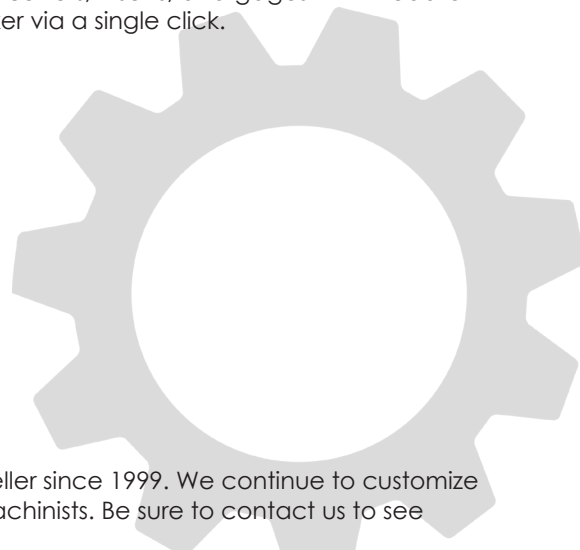
Machinists using Predator PDM can initiate manual data collection events such as job start, part start, operation start, setup start, etc. with Predator MDC via a single click.

Event	Start/End	Details
Logon	LogOff	1007 - Guy Barrow
Job Start	Job End	J1004 - Knob
Part Start	Part End	2014-150-75 - 7075 RVL - 1.50'
Operation Start	Operation End	10
Setup Start	Setup End	
Cycle Start	Cycle End	Cycling - 324 hours 57 minutes Since 9/30/2016 9:09:15 PM
Teardown Start	Teardown End	
Machine Downtime Start	Machine Downtime End	
User Downtime Start	User Downtime End	
Good Part Count	Scrapped Part Count	0 0
Custom Start	Custom End	



### INTEGRATES WITH PREDATOR TRACKER:

Machinists using Predator PDM can view tools, cutters, inserts, and gages with Predator Tracker via a single click.



Shop Floor Automations (SFA) has been the Number One Predator Software Reseller since 1999. We continue to customize solutions from this software line for many shop floor managers, engineers, and machinists. Be sure to contact us to see what we can do for you!

SFA combines an experienced and dedicated staff with internal systems for development, testing, and support of all Predator Software applications. We are committed to investing in the resources it takes to remain the recognized industry leader in shop floor automation technologies.

Shop Floor Automations, Inc.  
5360 Jackson Drive, Suite 202  
La Mesa, CA 91942-6003

**Phone:** (619) 461-4000  
**Toll Free:** (877) 611-5825  
**Fax:** (619) 461-5918

**Web:** [www.ShopFloorAutomations.com](http://www.ShopFloorAutomations.com)  
**Email:** [sales@ShopFloorAutomations.com](mailto:sales@ShopFloorAutomations.com)

